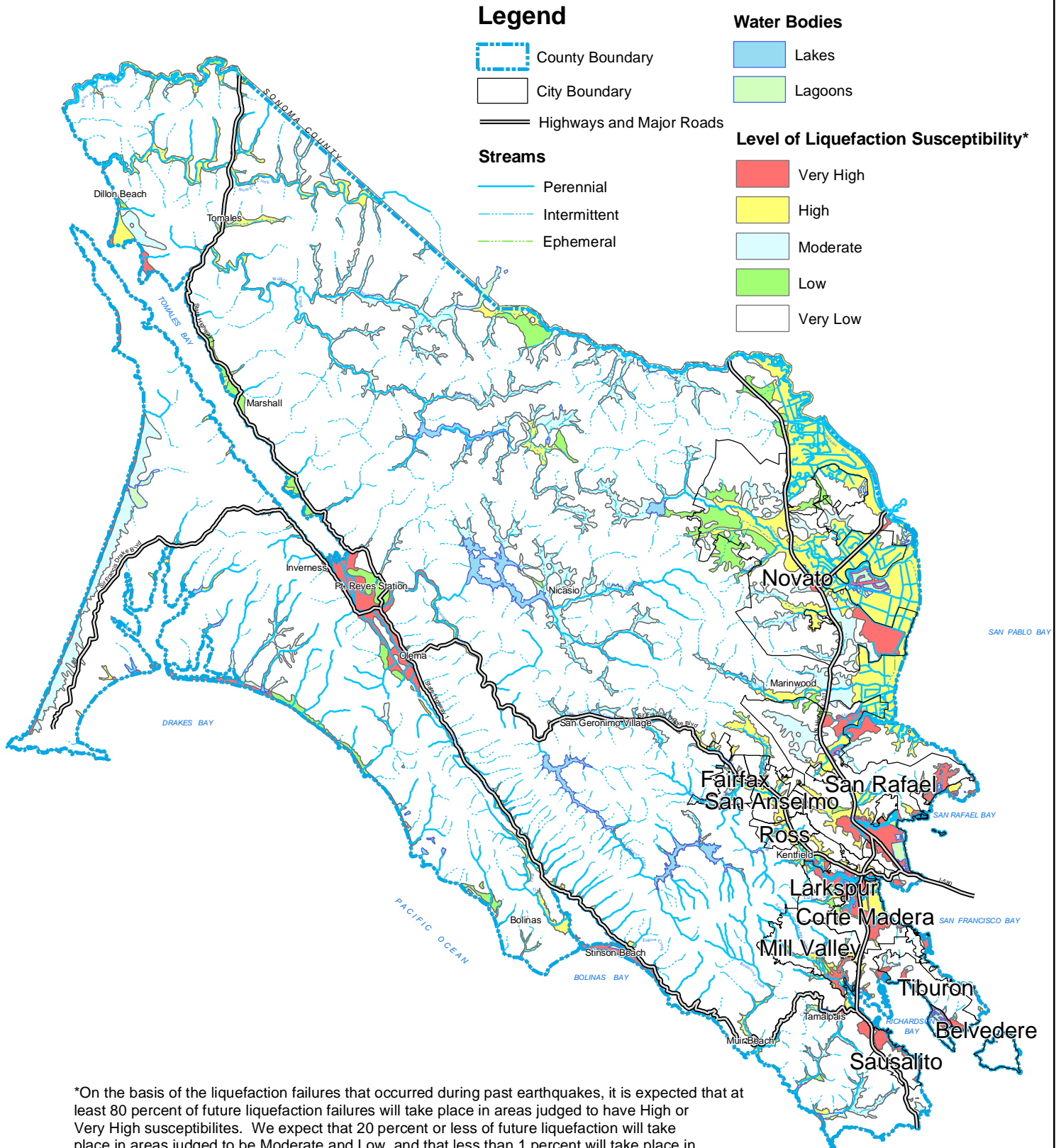
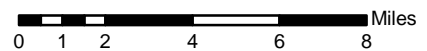


# MAP 2-11 LIQUEFACTION SUSCEPTIBILITY HAZARDS



\*On the basis of the liquefaction failures that occurred during past earthquakes, it is expected that at least 80 percent of future liquefaction failures will take place in areas judged to have High or Very High susceptibilities. We expect that 20 percent or less of future liquefaction will take place in areas judged to be Moderate and Low, and that less than 1 percent will take place in areas judged Very Low (Knudson et al., 2000).

SOURCE: Knudson, K. L., Sowers, J. M., Witter, R. C., Wentworth, C. M., and Helley, E. J., Preliminary Maps of Quaternary Deposits and Liquefaction Susceptibility, Nine-County San Francisco Bay Region, California: A Digital Database, Open-File Report 00-44, Online Version 1.0, U.S. Geological Survey, 2000.



THIS MAP WAS DEVELOPED FOR GENERAL PLAN PURPOSES. THE COUNTY OF MARIN IS NOT RESPONSIBLE OR LIABLE FOR USE OF THIS MAP BEYOND ITS INTENDED PURPOSE.

Date: June 14, 2005

File: Ligu 2-11.mxd